



MetMapper

Weather Explorer Series

OCENS MetMapper transforms weather maps, satellite images, and ocean charts into dynamic components of your at-sea decision-making tool box.

Weather maps, ocean charts and satellite images represent a unique integration of computer intelligence and human experience. Thanks in large part to OCENS WeatherNet and GRIB explorer the popularity of Gridded Binary (ie. GRIB) products has grown in recent years. As this has happened, the special insights offered by classical weather and ocean charts and the better than birds-eye view of weather events afforded by near-real time satellite images have been neglected. By unlocking the multiple layers of information contained in these unique products, OCENS MetMapper positions them in their rightful place as fundamental components of next-generation weather analysis.

Features and Benefits:

Displays and processes weather maps, ocean charts, satellite images, NEXRAD radar scans, buoy graphs and text analyses and forecasts;

Automatically adds an interactive map layer (i.e. geo-referencing) to a massive library of graphical weather and ocean products. OCENS' continuous additions to this library are rapidly acquired through a convenient file transfer mechanism

Sensibly auto-orientes the map, chart or image to a north-up perspective

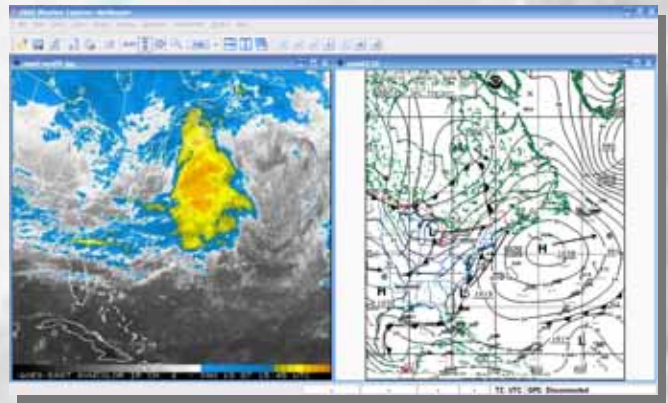
Custom mapping capabilities allow you to create and save map overlays for charts of special interest to you.

Powerful animation routines put the weather in motion through sequences you retrieve from OCENS WeatherNet or quickly build yourself;

GPS integration places your boat position inside of geo-referenced maps and animations;

Plot vessel tracks for one or more vessels and/or fleets delivered to you by vessel tracking services.

Selectable map background hues allow you to tailor MetMapper views to the ambient day or night lighting conditions that you encounter. Create a custom look and feel for your maps by associating geographic grids, political boundaries, coastlines, and geographic features with their own colors and spatial resolutions.



Interactive map overlays for weather charts, satellite imagery and more!

Full WeatherNet Integration

OCENS WeatherNet is the world's most comprehensive resource of weather and ocean data. Although MetMapper will view and process weather and ocean graphics you acquire from almost any source, its seamless union with WeatherNet creates a rare synergy between products destined to improve your ability to acquire and transform raw weather data into useful weather information:

Launch WeatherNet and easily select the maps and charts you want to review.

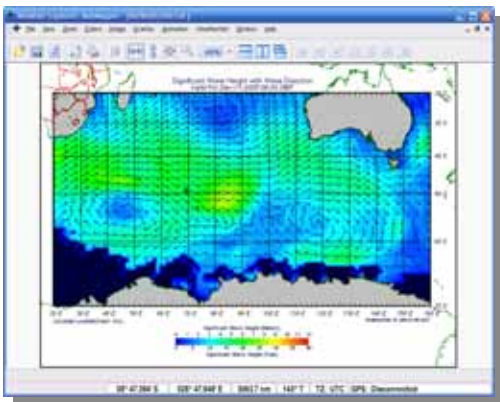
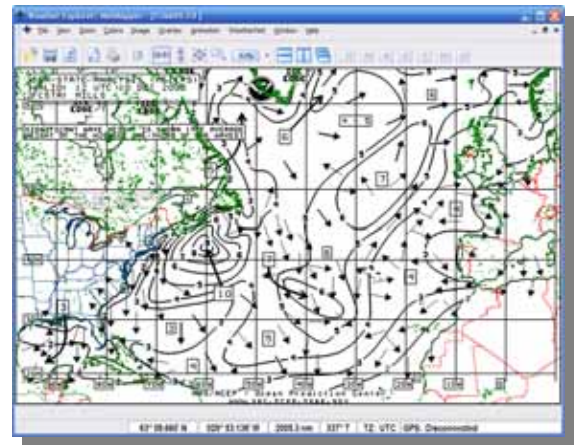
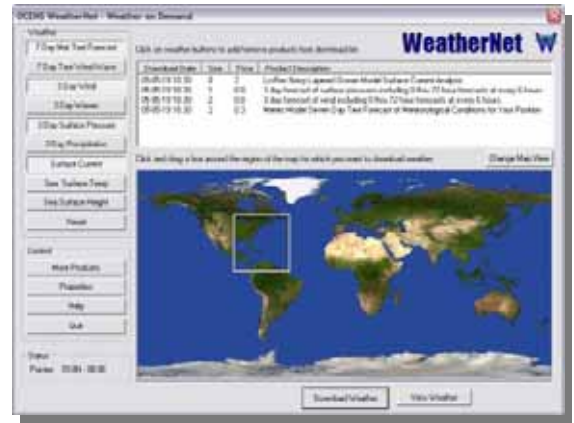
Download content quickly and efficiently even over low bandwidth satellite and cell phone connections with WeatherNet's File Transfer engine.

Automatically launch MetMapper at the end of your WeatherNet session to display and process your acquired files.

Maps are geo-referenced on-the-fly in MetMapper as it loads the files onto your computer screen.

Animations begin to roll with one click of the button.

No fumbling trying to find acquired files at a later date because WeatherNet keeps them organized in its hierarchical content library. Just double-click on the file in the WeatherNet library and WeatherNet silently launches MetMapper to review and process.



GRIB Explorer Companionship:

As a member of OCENS Weather Explorer series, MetMapper presents a comfortable graphical user interface similar to that you've grown used to in GRIB Explorer and other OCENS software packages. This consistency of presentation, along with the compatibility with WeatherNet, allows you to begin benefiting from MetMapper within minutes of your first use. And such common ground also permits you to comfortably transition between your views of weather through the MetMapper lens of weather charts and satellite imagery and the weather perspective you gain from GRIB Explorer's powerful rendering of GRIB weather.

Other OCENS Products

- ▼ **OCENS WeatherNet:** The most comprehensive wireless marine weather resource on the planet.
- ▼ **OCENS GRIB Explorer:** Unleashes the power of next generation weather and ocean data with the most robust GRIB data viewer in the world.
- ▼ **OCENS Mail:** Send and receive email twenty times faster than otherwise possible over your satellite phone.
- ▼ **OCENS XWeb:** Fast wireless web browsing with up to a 10x improvement in speed on your satellite phone.



OCENS
19655 1st Avenue South,
Suite 203
Seattle, WA 98148
www.ocens.com

800.746.1462 (toll-free US & Canada)
206.878.8270 (toll, worldwide)
206.878.8314 (fax)
sales@ocens.com (e-mail)