

Products to keep your cruising life safe and fun

While browsing the booths and docks at this fall's boat shows, we identified a number of great products that will enhance your cruising lifestyle and keep you safe while doing it. **by Andrew Cross**

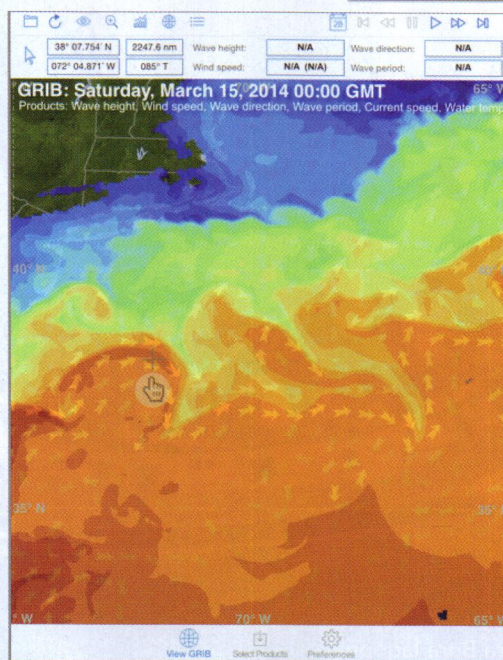
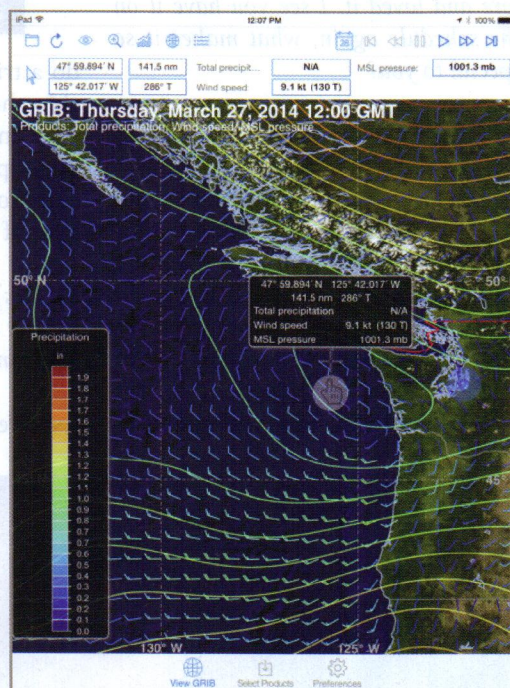


ZEAL Sunglasses

Creators of stylish and sustainable eye wear, ZEAL Optics in Boulder, Colorado, might be better known for protecting skiers' eyes. But their unique selection of polarized, impact-resistant sunglasses meets the demands of water people, too. Committed to the environment, ZEAL uses resin from the castor plant—rather than petroleum-based products—for 100 percent of its frames and plant-based material for many lenses. This doesn't mean they skimp on quality: the three ZEAL models I've tried all exceed the sunglasses I've worn previously in clarity, glare reduction and comfort. The frames are slightly adjustable so they'll fit you perfectly and there's even a model for very small faces. Most lenses can also be made to your prescription in ZEAL's own zero-waste Rx lab. They have "crafted" and "lifestyle" collections for going ashore somewhere fashionable and "active" and "performance" collections for your days out on the water. For more information visit www.zealoptics.com.
—Contributed by Ellen Massey Leonard

OCENS GRIB Explorer Plus iPad App

With a decade's worth of experience developing GRIB analysis tools for circumnavigators, expeditions and explorers, OCENS has recently launched a new user-friendly iPad app called GRIB Explorer Plus. GE Plus merges the unparalleled weather, ocean data processing power of its PC and Mac versions with the dexterity of the iPad platform. Using any Wi-Fi connection, including Wi-Fi enabled satellite phones such as the Iridium GO, Globalstar



Sat-Fi and others, you can access and download data files anywhere in the world from the all-encompassing OCENS Everon weather servers. GRIB data is then overlaid on super resolution earth imagery for any location in the world. GRIB Explorer Plus works with any GRIB that is formatted in a manner consistent with WMO GRIB1 standards, including those acquired via email or web sources. For more information visit www.ocens.com.